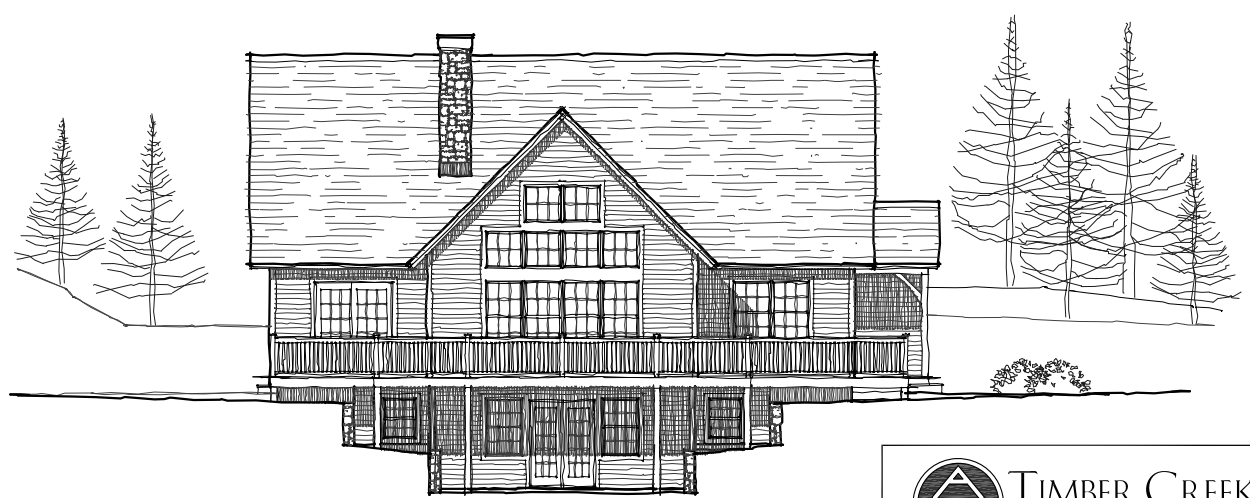
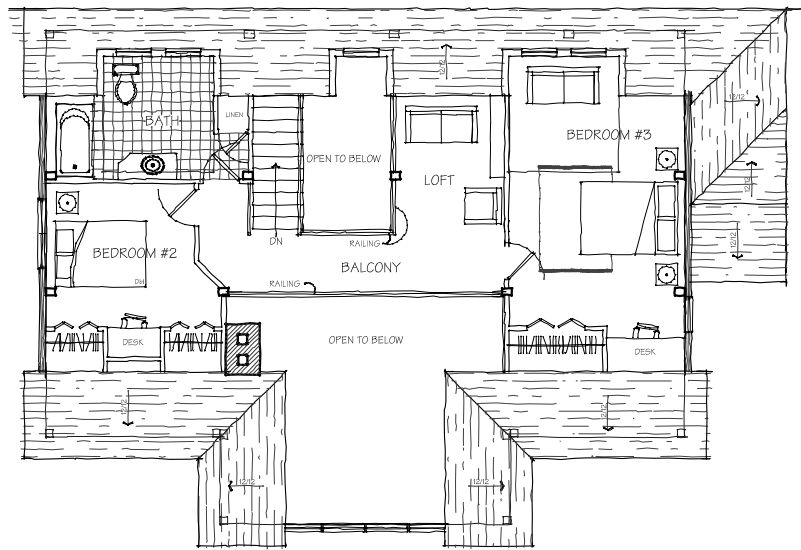
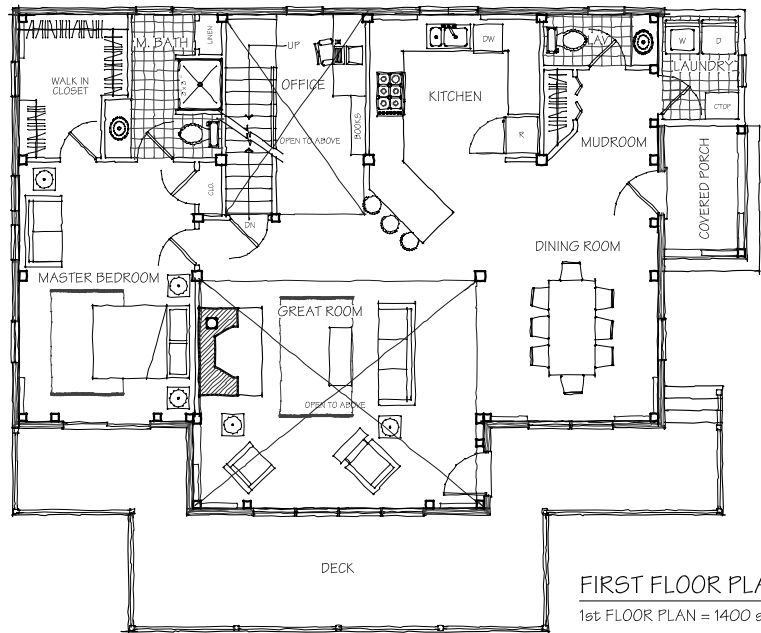


CAVENDISH

2150 square feet

A primary home design that has proven popular with its stylish floor layout. The cathedral living area, reading loft and balcony boast an open timber frame appeal. A spacious kitchen, three bedrooms, and mudroom entry complete this elegant family home.



TIMBER CREEK
POST & BEAM COMPANY
P.O. Box 90 ~ N. Clarendon, VT 05759
802.775.6591 ~ info@timbercreekinc.com
timbercreekinc.com