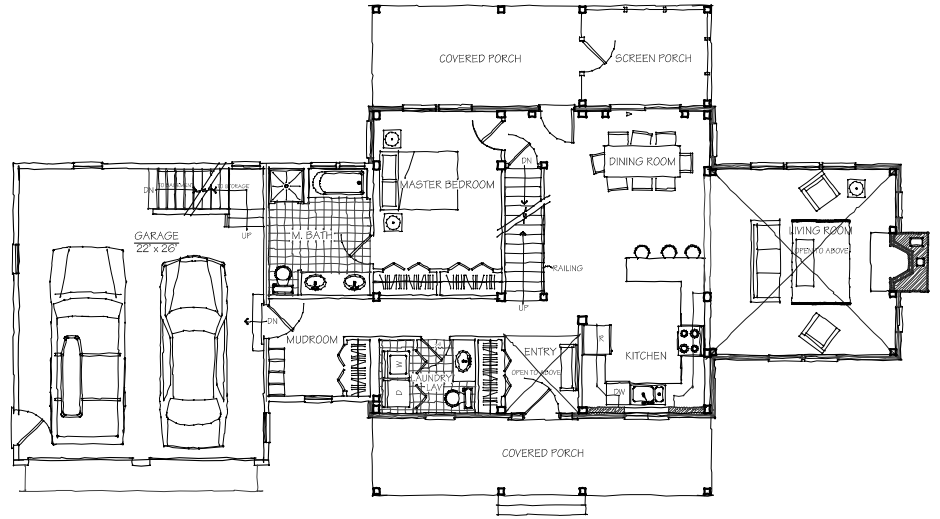


# ORCHARD FARM

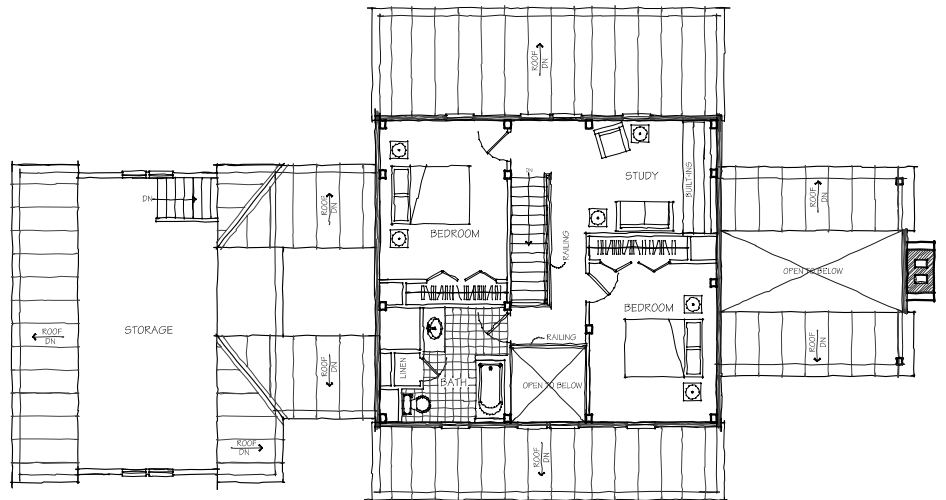
1900 square feet

The Orchard Farm 1900 has all the charm of the original Orchard Farm, but in a slightly more compact layout. The updated New England farmhouse style is enhanced with a welcoming covered porch and a vaulted entry that leads directly into the kitchen and dining areas. The screened porch, off the dining room, extends the house for warm weather dining and entertaining. The living room wing features a cathedral ceiling and a masonry fireplace. A privately located master bedroom and bath create a space for a restful retreat. A large mudroom and a combined laundry and 1/2 bath round out the first floor plan. Two equally sized bedrooms and a small study with an open stairway create a spacious feel. The two-car garage has a separate stairway that leads to a bonus space above.



FIRST FLOOR PLAN

LIVABLE SQUARE FOOTAGE = 1195 S.F.  
GARAGE = 572 S.F.



SECOND FLOOR PLAN

LIVABLE SQUARE FOOTAGE = 713 S.F.



TIMBER CREEK  
POST & BEAM COMPANY

P.O. Box 90 ~ N. Clarendon, VT 05759  
802.775.6591 ~ info@timbercreekinc.com  
timbercreekinc.com